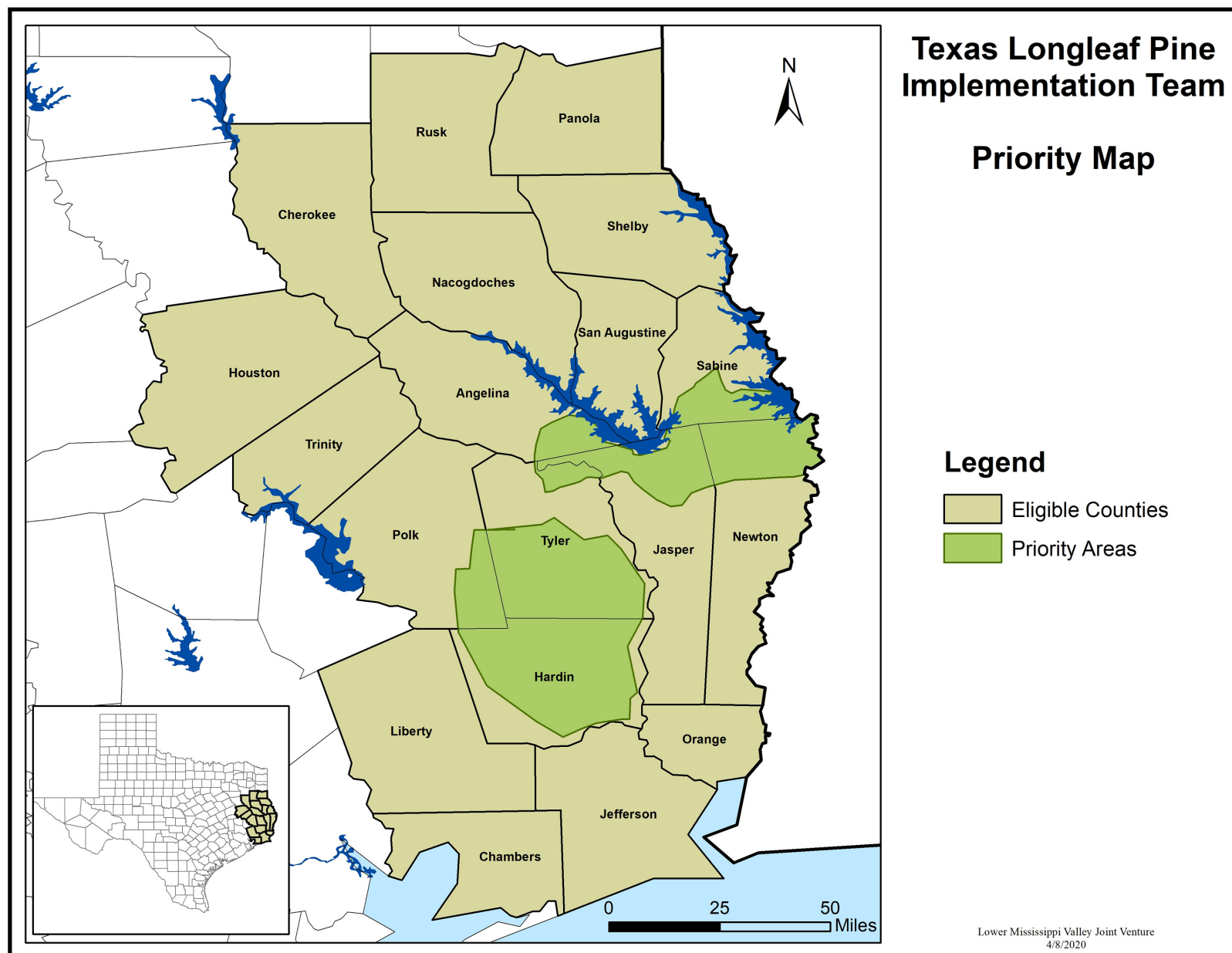


FINANCIAL ASSISTANCE AVAILABLE

For Forest Landowners



50%

COST-SHARE:

Approved participants will receive 50% reimbursement of total costs up to the maximum amounts below:

Prescribed Burning - \$30/ac

Site Preparation/Planting - \$450/ac

Forest Stand Improvement - \$275/ac

WHY LONGLEAF?

Asset Protection

Longleaf is more resistant to insects, wind, and wildfire than other southern pine species.

Wildlife Value

Longleaf thrives on prescribed fire, which stimulates the growth of important understory plants and promotes habitat conditions critical for many wildlife species, including white-tailed deer, wild turkey, bobwhite quail and more!

Value from Wood Products

Longleaf is known for producing great quality lumber with superior strength, durability and appearance. In addition to providing pulp wood from thinning, a well-managed longleaf stand can produce excellent quality utility poles starting at age 30 – 35. Trees sold for utility poles provide much higher prices than trees sold for pulp.

Low Up-front Costs/Offset Returns:

Cost-share programs can help offset the initial investment with a new longleaf stand. Depending on the soils selected, the first thinning of longleaf may not occur on the same time interval as similar-aged loblolly stands. Some producers consider this offset by the incentive payments at establishment.



Contact Jenny Sanders, Texas Team Coordinator, to learn more | jennyreneesanders@gmail.com | (936) 225-2175
www.txlongleaf.org



NFWF

INTERNATIONAL PAPER