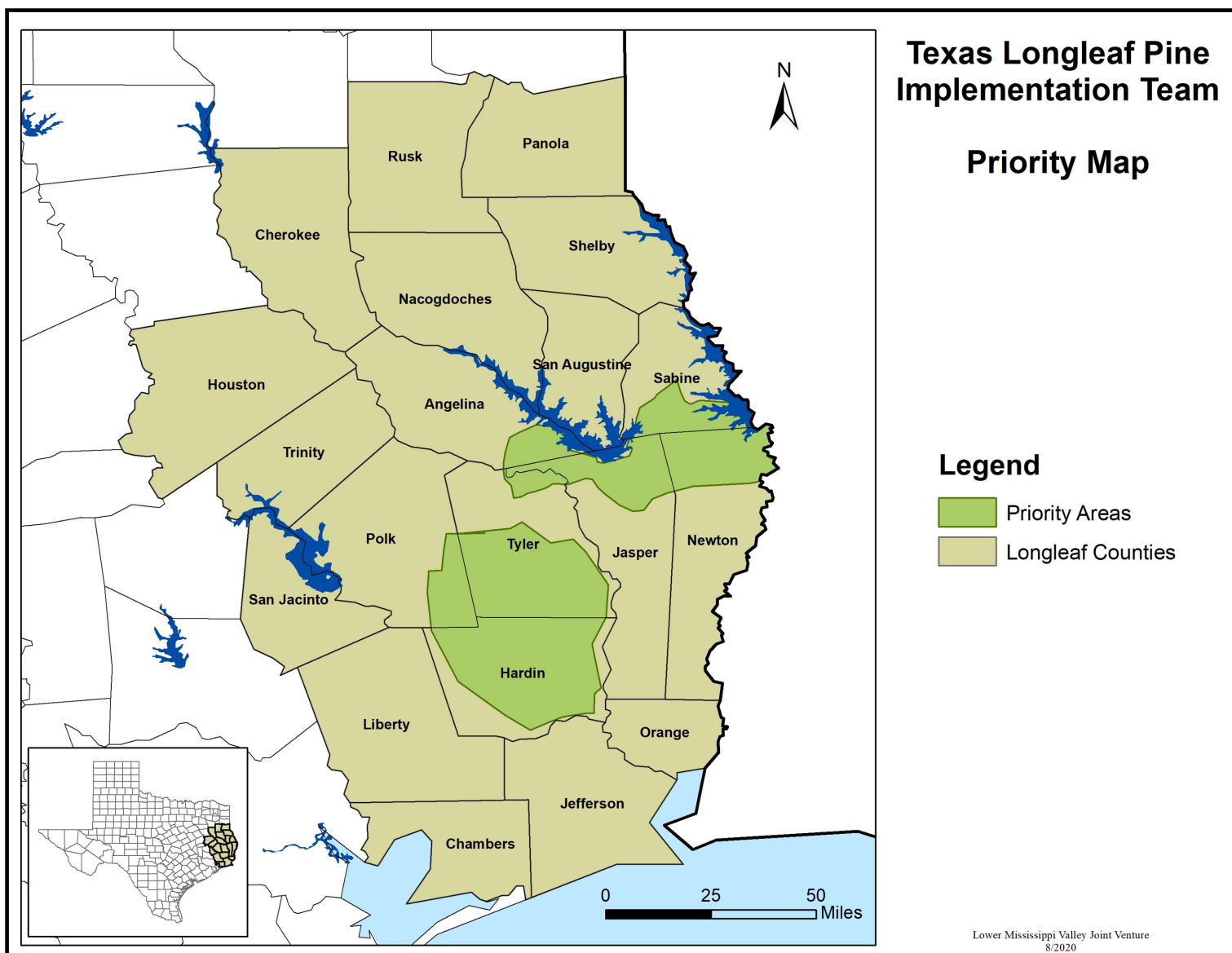




# FINANCIAL ASSISTANCE AVAILABLE

## For Forest Landowners



# 50%

## COST-SHARE:

Approved participants will receive 50% reimbursement of total costs up to the maximum amounts below.

**Prescribed Burning - \$30/ac**

**Site Preparation/Planting - \$450/ac**

**Forest Stand Improvement - \$275/ac**

## WHY LONGLEAF?

### *Asset Protection*

Longleaf is more resistant to insects, wind, and wildfire than other southern pine species.

### *Wildlife Value*

Longleaf thrives on prescribed fire, which stimulates the growth of important understory plants and promotes habitat conditions critical for many wildlife species, including white-tailed deer, wild turkey, bobwhite quail and more!

### *Value from Wood Products*

Longleaf is known for producing great quality lumber with superior strength, durability and appearance. In addition to providing pulp wood from thinning, a well-managed longleaf stand can produce excellent quality utility poles starting at age 30 – 35. Trees sold for utility poles provide much higher prices than trees sold for saw logs.

### *Low Up-front Costs/Offset Returns:*

Cost-share programs can help offset the initial investment with a new longleaf stand. Depending on the soils selected, the first thinning of longleaf may not occur on the same time interval as similar-aged loblolly stands. Some producers consider this offset by the incentive payments at establishment.



Contact Jenny Sanders, Texas Team Coordinator, to learn more | [jennyreneesanders@gmail.com](mailto:jennyreneesanders@gmail.com) | (936) 225-2175  
[www.txlongleaf.org](http://www.txlongleaf.org)



NFWF

INTERNATIONAL  PAPER